



30.01.2023 | JANUARY EDITION

# The Waterbuck

*This newsletter is published and distributed by ZimParks*



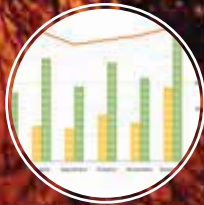
**DEFENDERS OF THE WILD**  
All in a days work

**02**



**WILDERNESS SURGEONS**  
The Vet Doctor

**03**



**TOURISM DESK**

**09**



**HEROES OF THE WILDERNESS**  
Passing On The Baton..

**10**



**EXHORTATION**  
Stepping into the extraordinary Territories

**11**

[www.zimparks.org.zw](http://www.zimparks.org.zw)



Z I M P A R K S N E W S

## DEFENDERS OF THE WILD



### “ ALL IN A DAYS WORK ”

Meet John Mpofu (not his real name), his day begins early in the morning while many are still enshrouded in deep sleep and homely comforts. Armed with a rifle, daily rations and water, he prepares to encounter the scorching heat and the thick jesse bush and savanna woodlands that define his office. The usual run-in with a pack of lions or an elephant bull in musth is all part of a day's work in protecting wildlife from the perils of poaching in Zimbabwe's pristine national parks and other protected areas.

John is but one of over 2000 brave men and women who work tirelessly, day and night, patrolling our parks to ward off any dangers to our shared natural heritage.

Beyond anti-poaching patrols, our rangers spend brain, bone and muscle protecting wildlife habitats in different ways; shielding against wild fires, dealing with water shortages and managing invasive species among others.

Our teams are also active in the communities, especially those that live on the peripheries of our national parks. Growing populations of both wildlife and people competing for limited resources such as land and water inevitably results in conflict, which at times has fatal consequences. Zimparks works hard to minimize this conflict and facilitate peaceful coexistence between man and animal.

A quick look at the numbers for 2022 reveals that from 896 poaching incursions, there were 650 arrests, 12 armed contacts and recovery of 19 rifles and 3 rhino horns.

ZimParks also exceeded its fire management target by 31% while boreholes for game water supply increased from 206 in 2021 to 248 in 2022. Significant progress also took place in the management of invasive species which malignantly modify wildlife habitats and ecosystems; 45% of affected areas were managed in 2022 compared to 8% in 2021. Human-wildlife conflict also remains challenge, although there was a 24% reduction in cases from 2,126 in the previous year to 1,617 in 2022.

This is but a glimpse of what it means to be a ranger, fighting an undeclared war against poachers, climate change and many other threats to our environment. The challenges and complexities are endless, but with a passionate, motivated team and a combined effort from all stakeholders these mountains can be overcome.

As the sun sets, John returns to his base, exhausted but satisfied. He knows full well that today he played his part,

and now withdraws from battle to get some well-deserved rest and prepare for another day on the frontlines of wildlife conservation.

## MAMMALS OF ZIMBABWE



English Name	Scientific Name	Ndebele Name	Shona Name
Shrews	Soricidae	Umstwebe	DuneMudhende
Life span 8years Gestation period 130 dys			

## WILDERNESS SURGEONS

## THE VET DOCTOR

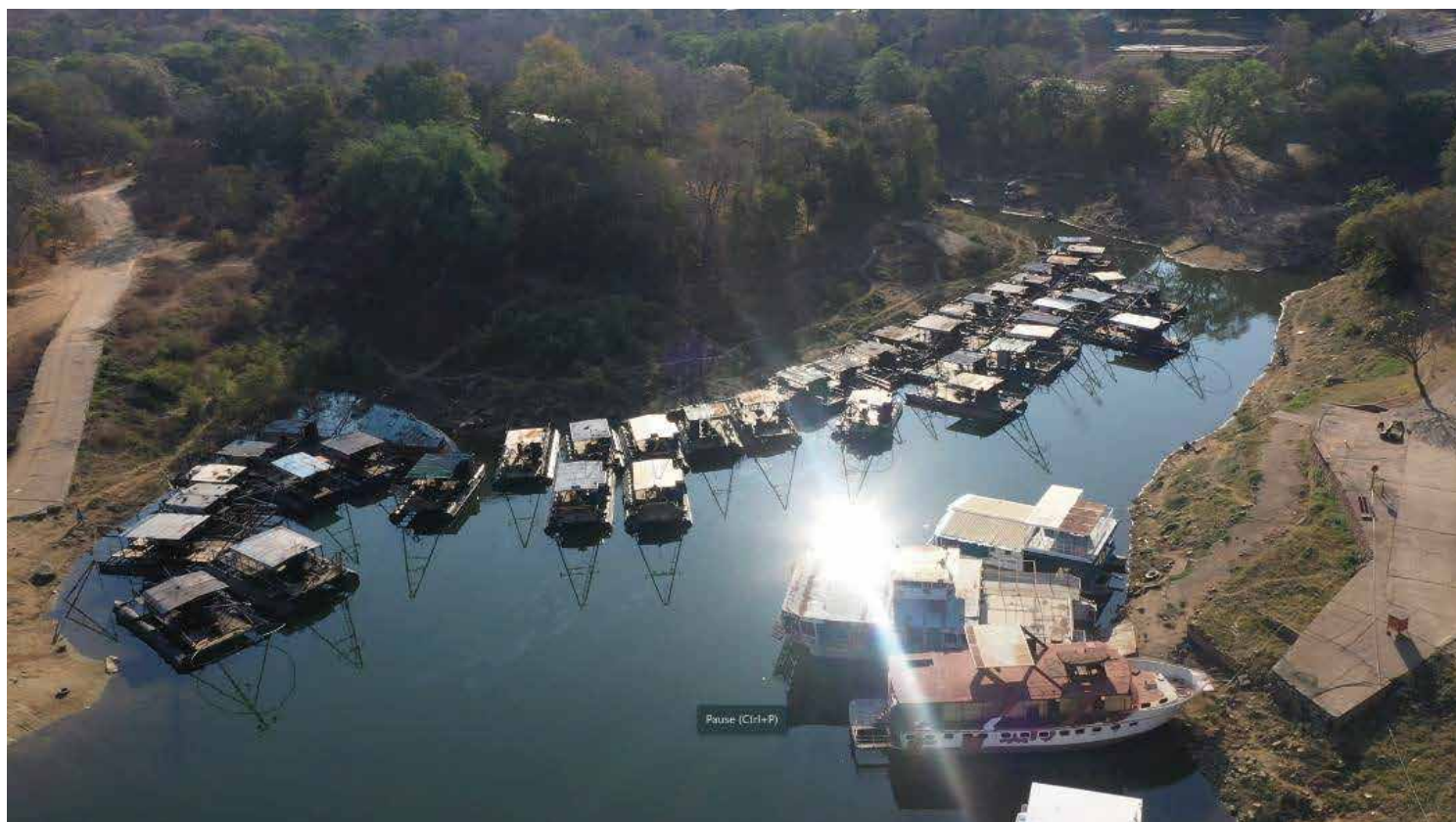


A report is received of an injured lion, snared by a poacher. Unfortunately, the lion is not stationary and remains elusive in its grassland habitat. Early in the morning, our veterinary team tracks the lion to identify its whereabouts. Upon finding its hiding place, they lay the bait and wait for nighttime to dart the ferocious cat and heal its wounds. The volumes of the tranquilizer must be just right, too little and everyone is dinner, too much and the cat may die... Fortunately, experience wins the day! The lion's wounds are dressed and the big cat is released back into the wild. Imagine treating patients at the risk of your own life. Not only does it take courage but a burning desire to help the voiceless creatures we share our planet with.

Zimparks has a vibrant Veterinary and Capture Unit (VCU) led by Dr. Columbus Chaitezvi. They travel around Zimbabwe attending to wildlife medical emergencies like removal of snares, disease outbreaks and investigating inexplicable deaths. In addition, they conduct sensitive translocation missions that can be extremely taxing on both man and beast. Among other roles, the VCU plays a key part in the conservation of endangered species such as the Square and Triangular Lipped Rhinoceroses (*Ceratotherium simum* & *Diceros bicornis*) through regular dehorning exercises; this discourages poaching of these iconic animals.

This team has dedicated their lives to treating our four legged, feathered, scaled and slithering friends. Thus far, the International Fund for Animal Welfare (IFAW) has donated an ambulance to aid current efforts, however, there's so much more that needs to be done.

To support this cause contact Dr. Chaitezvi on [cchaitezvi@zimparks.org.zw](mailto:cchaitezvi@zimparks.org.zw).



### Lake Kariba Kapenta Fishery Vessel Monitoring System.

Kapenta fish (*Limnothrissa miodon*) was introduced into Lake Kariba between 1967 and 1969 after the construction of the dam. The initial stock was flown in from Lake Tanganyika and the fish thrived well enough to establish a vibrant industry which is active to this day.

In order to ensure sustainability of the sector, it is important to ensure that harvesting does not compromise breeding. For this reason, Lake Kariba is divided into basins for management with limits to the numbers of fishing rigs and enforcement of fishing restrictions in breeding zones.

To ensure compliance with these regulations, the Lake Kariba Kapenta Fishery Vessel Monitoring System Project (VMS), which is now in its second phase of trials, was launched to enable tracking of vessels and collect real time data on the volume of fish harvests by an individual rig. 3 rigs were fitted with a self-powering system, linked to a satellite, which tracks the movements of the rig in the water and flashes warning lights when the rig is venturing into restricted areas, sending sms or email alerts to the regulatory Authority and the owner of the vessel.

ZimParks monitors the rigs remotely whilst the rig



crew have the VMS system on board which reflects the depth at the location of the rig. They also have access to an application which allows entering of catch data on board using smart phones. This system allows for accountability in fish catch, reducing the chances of distorted catches and pre-landing sales of fish which have affected the fishery. Ecologists analyse seasonal changes in the success of harvests and any trends that are noteworthy towards aquatic wildlife conservation. ZimParks subscribes to sustainable utilization of wildlife resources and the implementation of such programmes ensure that the generations to come shall still enjoy the delicacy of Kapenta.

By: Chief Ecologist Aquatic - Mr. I.H. Tendaupenyu

# COULD BE THE BIGGEST EARTH DAM IN AFRICA



The TFCA Unit, Community Liaison, Monitoring and Evaluation, Information Technology Department, and CAMP-FIIRE Association visited the Maitengwe Dam site to evaluate outcomes of the Maitengwe Dam project after the dam was rehabilitated following a breach in 2015 that resulted in the dam not being able to hold water anymore. The rehabilitation was supported by funds sourced through KAZA TFCA .

Currently (January 2023), the dam has filled to its full capacity and is spilling off. The bird diversity has improved since the last visit in November 2022. Big game has also been attracted to the dam with a recent sighting by local community members of 18 elephants drinking from there.



## ZIMOZA (TFCA)



*Engagement with ZIMOZA TFCA Key Stakeholders*

### ZIMBABWE MOZAMBIQUE TRANSFRONTIER CONSERVATION AREA TOUR ARTICLE

The ZIMOZA TFCA is a transboundary initiative for managing shared natural resources through community-based resource management, infra-structural development and policy harmonization.

The area consists of four districts, which are Mbire in Zimbabwe, Zumbo, and Magoe in

Mozambique, and Luangwa in Zambia. It is located in the Zambezi valley where the Zambezi River and Luangwa River meet, covering a total area of approximately 29,859 km<sup>2</sup> of National Parks, Game Management Areas, Safari Areas and communal land.

The TFCA Unit visited the Zimbabwe component of the ZIMOZA TFCA to engage with the Key Players and the deliberations were on the finalisation of the Draft Memorandum of Agreement which the three Partner States envisaged to sign before the end of the year 2023.

## TOURISM DEVELOPMENTS

### Recently renovated cottages at Hwange Main Camp





## Fastjet to Launch new Routes to Kariba and Hwange National Park

*Airspace Africa*

Fastjet Zimbabwe announced it will commence air services to two new domestic leisure destinations of Kariba and Hwange National Park in Zimbabwe.

The new services will depart from Harare and Victoria Falls to Kariba Airport and Hwange National Park Airport beginning late March 2023.

These planned additional routes to the airline's domestic network will offer seamless connections for travellers from Harare and Victoria Falls to Zimbabwe's top domestic tourism destinations of Kariba and Hwange, with scheduled flight connections using Embraer E120, 30-seater turbo-prop aircraft.

Nunurai Ndawana fastjet Zimbabwe spokesperson said "We continue to demonstrate our commitment to the growth of tourism and the sustainability of air services in the markets we serve. The addition of these leisure destinations will greatly support our vision".

"The Embraer E120 is a robust turbo-prop aircraft designed for domestic operations, offering customers a pressurised cabin with spacious legroom and overhead baggage space. We intend to align our timings to schedule our flights in such a way that we offer customers the flexibility and convenience of multiple frequencies per day" concluded Nunurai Ndawana.

Working closely with our industry stakeholders and partners, including Airports Company of Zimbabwe and the Civil Aviation Authority of Zimbabwe, we continue to explore ways to further develop the domestic Zimbabwean flight network. We are delighted to announce that our new flights to Hwange and Kariba from our tourism hub of Victoria Falls and our Harare base, will be supported with onward connections on Mack Air / South West Aviation into the Hwange National Park, the lodges of the Kariba eastern basin and the camps and operations in Mana Pools and the lower Zambezi. Mack Air with South West Aviation will be developing a new hub at Kariba, along with their existing hubs in Victoria Falls and

Harare to support these seamless connections to and from fastjet's services." said Vivian Ruwuya, fastjet Zimbabwe's Chief Commercial Officer.

"The introduction of flights to Kariba and Hwange now allows visitors in Victoria Falls to explore the wonders of Zimbabwe further by visiting both Hwange National Park and enjoy some time on the lake in Kariba with its varied activities of game viewing, boating and fishing" concluded Vivian Ruwuya.

Kariba and Hwange will add to fastjet's domestic destinations of Harare, Bulawayo, and Victoria Falls, as well as provide straight-forward connectivity for international customers flying in from Johannesburg via Victoria Falls to and from Kariba.

The new flights will be available for booking via the fastjet website, App and usual online trade portals in the coming days.

# TOURISM DESK NYANGA



*Scenic Nyanga by Tami Mudzingwa*

In the rolling hills of the Eastern Highlands lies one of Zimbabwe's hidden gems, Nyanga National Park. Nestled in thick evergreen forests, the hills and valleys are punctuated by majestic waterfalls, streams and rivers flowing with crystal clear water. The mystical Mt. Nyangani imposes its towering presence over the scenic view, while the lesser peaks and lush valleys complete nature's portrait of this wonderful place.

Located 271km from Harare and 108km from Mutare, Nyanga provides a convenient getaway from the hustle and bustle of city life. Upon arrival, all visitors are greeted by an inexpressible serenity that can only be explained by the body's transition into a mode of relaxation. The journey itself is captivating. When approaching Nyanga one will discover roads flanked by flat-top acacias while the granite mountains, littered with the indigenous Msasa trees, display an assortment of brown, red and gold colours between winter and spring.

While the hills are covered in dense pine and wattle forests, the cool valleys are home to species of proteas, everlastings and sprawling orchards filled with fresh fruit. In

addition to an abundance of plant-life, the bird watching is prolific; with over 300 species including migratory birds that fly in between November and April. Nyanga is also home to zebra and several species of antelope, including the waterbuck, wildebeest, klipspringer, kudu and eland. The main predators include leopards, hyenas and the occasional lion.

The perennial streams are stocked with rainbow trout, providing the finest fly fishing experience in Mare, Rhodes, Gulliver and Purdon lake. Udu is the only lake where bream fishing takes place.

The rippling landscape also presents an array of adventure activities; hiking, canoeing, biking trails and abseiling which will definitely get one excited. For an adrenaline rush, an encounter with the famed Skywalk and Zipline at Mtarazi Falls awaits. Troutbeck offers a verdant 18-hole golf course in addition to horse rides to suit all ages and ability. History enthusiasts can visit the granite pit structures from the Stone Age and historical sites such as rock paintings and ancient gold workings. The Rhodes museum likewise chronicles Nyanga's bygone years and this visit must be complemented by a trip to the scenic World's View for a more far-reaching experience.

For overnight stays, an abundance of options is available. One could rough it out in the campsites provided by

ZimParks, or enjoy a more comfortable stay at Montclair, Troutbeck, Blue Haze, Pine Tree Inn and many other lodges and hotels. Moreover, Zimparks provides self-catering facilities located at three camps, namely Udu, Mare and the recently renovated Rhodes camp; all well-suited for the budget traveler.

The road to Nyanga is well paved, easily accessible with a small vehicle. However, navigating within the national park would require a high clearance vehicle (preferably with 4WD) due to the rough terrain. To get there from Harare one takes the Mutare road, till Rusape. In Rusape, the road signs clearly indicate Nyanga/Juliasdale. From there, head on straight and experience a journey to be remembered.

There's so much more Nyanga has to offer, and all that's been shared does not amount to a tenth of what awaits every visitor. Words will never be enough, see it for yourself and witness the marvel of nature that is Nyanga National Park.

For enquiries or bookings contact the Nyanga National Park office on

+263773500399.



# TOURISM DESK

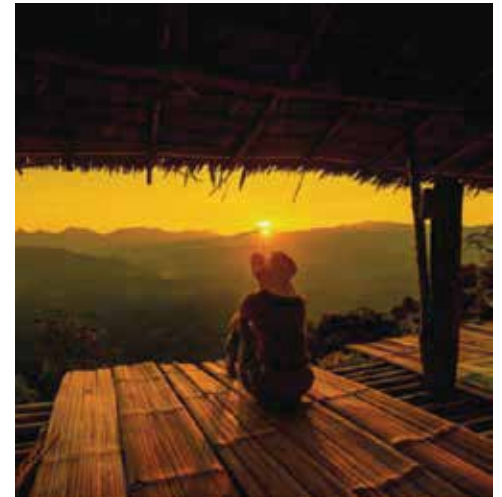
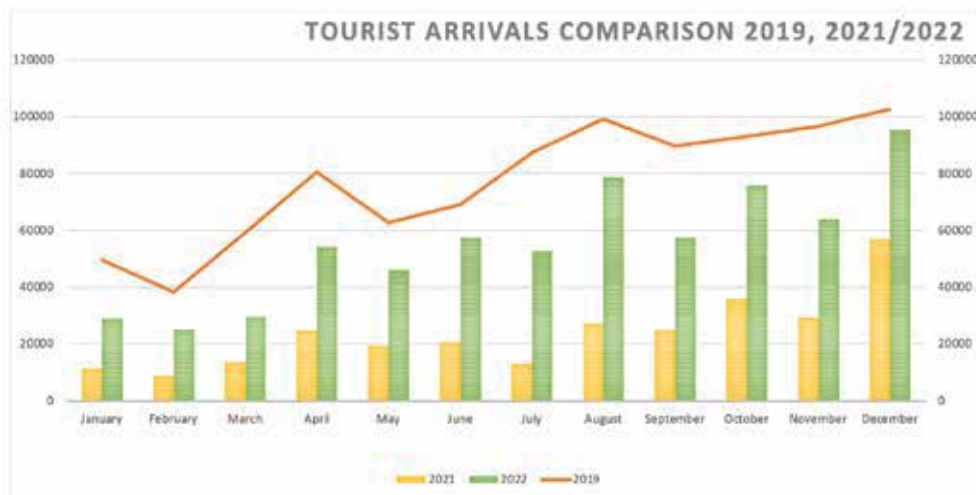


Figure 1: Comparison between 2019, 2021 and 2022

Although the global tourism industry is still in recovery mode, tremendous effort has been exerted to overcome the challenges of the last two years. With expectations of a slow recovery akin to 2021, 2022 tourism activity was better than expected. With the opening of the skies, some routes were renewed while new ones were (and are still being) established.

For Zimbabwe, 2022 marked a strong upsurge in international traffic, whose contribution to total arrivals grew by 19% from 12% to 31%, with an increase in volumes from 35,256 in 2021 to 215,236 in 2022. In addition, there was encouraging growth from the domestic sector with arrivals increasing 79% from 251,088 to 468,694. In spite of the headwinds being experienced by global markets; Europe in particular, international arrivals are still expected to continue on an upward trajectory albeit at a slower rate.

Increasing awareness of tourism & leisure opportunities is one of the major factors driving the growth of the domestic market. Performance is expected to continue improving and possibly exceed 2019 levels.



# CARTRACK

In Support of Conservation

## 4X4 Expedition

GAME VIEWING

FISHING

4X4 CHALLENGE

\* Registration US\$40



MATUSADONHA  
NATIONAL PARK


30 MARCH - 2 APRIL

US\$500

Includes tent, mattress  
and all meals

### FOR BOOKINGS

SEAL | +263772232069/079/080

ZIMPARKS | +263776134164 | +263772398947 |   
emuhaamba@zimparks.org.zw

Powered by



## CHALLENGE

### CarTrack 4x4 Expedition

Matusadona National Park is one of Zimbabwe's most pristine wilderness landscapes, bordered by Lake Kariba to its north and the Sanyati and Ume rivers on the east and west. Situated in the northern part of Zimbabwe, the park is the 5th largest national park in Zimbabwe and gets its name from the Matusadona hills that form part of its rich scenery.

As the rising waters of Lake Kariba that flooded the islands and the flood plains of the Zambezi valley soon after the dam's construction, it became apparent that thousands of animals would perish. However, Matusadona became a sanctuary for most of the relocated animals in one of the most daring translocations in history commonly known as Operation Noah.

Proclaimed as a national park in 1975, this remote and rugged park is the first in Zimbabwe to fall join the African Parks network under a co-management arrangement with Zimparks. The pristine landscape of the Zambezi escarpment offers excellent game viewing and bird watching with opportunities to see the big four (elephant, lion, buffalo and leopard), plains game such as impala and kudu; and an array of birdlife. If you enjoy the outdoors and would like to take your 4x4 for a "real" test drive, the craggy terrain of Matusadona is definitely for you! Zimparks, together with Sahwira Events & Lifestyle will be hosting a 4x4 expedition to Matusadona National Park from 30 March to 2 April 2023 proudly sponsored by CarTrack and other corporates in support of conservation.

The expedition includes 4x4 trails, game viewing, fishing and nature walks; and this trip stands to be a memorable encounter with one of Zimbabwe's most enchanting wilderness escapes. The park may be accessed via road, air and water. However, this challenge to Matusadonha will be travelled by road and high clearance, 4x4 vehicles are strongly recommended. The park can be accessed from 3 major cities; Harare, Gweru, and Bulawayo and preparations will be made weeks before the date of departure including provision of a checklist and 4x4 training sponsored by Autoworld. There are limited spots available; book early and don't miss out!



## COMMUNITIES

### Zimparks to build a clinic for Mbire Community



Responding to the outcry of the Mbire community the Zimbabwe Parks Wildlife Management Authority Board Chairperson Dr Agrippa Sora has committed to build a clinic in Ward 2 as part of the organisation's corporate social responsibility.

The clinic will be a relief to the villagers who were forced to travel 36km for medical attention.

Mbire district is surrounded by protected areas and animals use the area as a crossing point thereby endangering the lives of the villagers.

In 2022 Ward 2 recorded 4 deaths and 14 injuries.

Speaking at an awareness campaign that was held at Angwa Secondary School in Mbire District Ward 2, the Zimparks Board Chairperson Dr Agrippa Sora said that Zimparks is committed to bettering the lives of the community and will build the clinic for the community.

"Zimparks will provide all the building materials in order for the clinic to be built. Once the clinic is built people will not need to travel far when they need medical assistance.

Ward 2 Councillor Chimukoro said the presence of animals is a danger to the people as they depend much on their crops and livestock but the presence of a clinic nearby will help in saving lives

"People get injured because they guard their crops during the night a time when animals will be roaming and Ward 2 is also used by animals to cross into Mozambique and back so the people their livestock and crops are at risk and we thank Zimparks for committing to build a clinic this will definitely save lives"

The rural district council through the Campfire programme is working together with Zimparks and Safari operators to ensure that the community benefits from the wildlife resource.

# WILDLIFE AMBASSADOR

“Her Excellency Dr Auxillia Mngangwa”



## First Lady Appointed Wildaid Global Ambassador In Africa

Her Excellency Dr Auxillia Mngangwa has been appointed Wildlife Ambassador in Africa for an international organisation — WildAid Foundation, in a development expected to enhance the country’s conservation efforts and stimulate the economy.

Dr Mngangwa said with her new role, she will amplify awareness among other African First Ladies during their roundtable meetings. WildAid founder and president Mr Peter Knights said he was delighted the First Lady had accepted the post.

“We are very excited and honoured today that the First Lady Dr Auxillia Mngangwa has agreed to become our ambassador for wildlife, environment and forestry.

Not just here in Zimbabwe but across Africa to promote wildlife and tourism here in Zimbabwe and to put Zimbabwe on the map internationally as a great destination for people to come and enjoy wildlife and stimulate the economy at the same time. We see the First Lady has been an amazing champion for tourism,

wildlife and the environment here in Zimbabwe and we are hoping that she takes that role beyond Zimbabwean borders.

So we will be doing a series of events and activities with her,” he said. Dr Mngangwa said with her new role, she will amplify awareness among other African First Ladies during their roundtable meetings. WildAid founder and president Mr Peter Knights said he was delighted the First Lady had accepted the post. “We are very excited and honoured today that the First Lady Dr Auxillia Mngangwa has agreed to become our ambassador for wildlife, environment and forestry.

Not just here in Zimbabwe but across Africa to promote wildlife and tourism here in Zimbabwe and to put Zimbabwe on the map internationally as a great destination for people to come and enjoy wildlife and stimulate the economy at the same time.

# Zimparks Service Excellence Training



ZimParks director-general Dr Fulton Upenyu Mangwanya address

## Zimparks, ZTA partner to train frontline staff

Towards the end of 2022, the Authority embarked on a nationwide Service Excellence Training programme in a bid to improve service delivery. Areas covered included customer services, house keeping, telephone and office etiquette, grooming and deportment. About 600 staff members were anticipated to take part in the initiative which was conducted by the Zimbabwe Tourism Authority's Training Department.

The training targeted all staff members who directly interface with customers on a daily basis and included lodge attendants, reservationists, rangers, cashiers, garden technicians, receptionists, general hands, waiters, barmen, cooks and porters.

The training was officially launched at Head Office by Dr. Fulton Mangwanya, the Director General on 7 September 2022 where 40 staff members and issued with certificates. The programme was later extended to five regions including Eastern Highlands, South East Lowveld, Sebungwe, Mid-Zambezi and Central region.





# ZIMPARKS *Gardens*



## HARARE'S FINEST

WEDDINGS



CORPORATE EVENTS



SCHOOLS EXPO



PICNICS | BRAAIS,



MINI GAME PARK



PRODUCT LAUNCHES | PRIVATE PARTIES & LOTS MORE

*Book today...*

RECREATIONAL PARKS

Chivero | Chintshi | Darwendale  
Kariba | Osborne | Sebakwe | Kyle  
Ngezi | Umfurdzi

NATIONAL PARKS

Chimanimani | Chizarira | Gonarezhou  
Hwange | Kazuma Pan | Manapools | Matobo  
Matuzadona | Nyanga | Victoria Falls | Zambezi

BOTANICAL GARDENS

Vumba | Ewanrigg



Contact : +263 (242) 707625-8

VOIP : +263-86677707627

Email : [bookings@zimparks.org.zw](mailto:bookings@zimparks.org.zw)

Bookings : Whatsapp +263776134164

[www.zimparks.org](http://www.zimparks.org)



*In harmony with nature...*

# Heroes of the Wilderness

# Passing On The Baton



Mr Makotose



Mr T. Jura



Mr Nguzo



Mr Mugayi

A special occasion was held at the Corporate Center and other regions to honour and recognise the contribution made by the retired employees towards the end of 2022. There were 34 in total, some of whom served the organisation for more than 40 years.



LETS • PLAY • PARTY & REST AT YOUR ONE STOP



RESTAURANT  
OUTDOOR CATERING

WEDDINGS  
PARTIES

EXECUTIVE BAR  
ACCOMMODATION

*your ultimate choice...*





# Exhortation



## Stepping into the extraordinary Territories

**Bible Text:**

**Job Chapter 8 : Verses 7, 14 & 22**

**“Your beginning will seem so small, since your future will flourish.”**  
**“whose trust is in something futile, whose security is a spider's web.”**  
**“Those who hate you will be clothed with shame, and the tent of the wicked will be no more.”**

## Chaplain General T Mashingaidze

Job's friend Bildad the Shuhite spoke up and told him that even though his beginning was small his end shall be great. Many of us are discouraged by the current circumstances yet God has good plans for us. It is better you envisage the end rather than considering the current sufferings.

- ☒ Trust in the Lord and not entirely in your mechanism
- ☒ Your enemies can be put to shame and those who deal wickedly will be destroyed
- ☒ The call here is to understand your God and press on even if things do not seem to add up

### Prayer

Oh God I will not despise the day of small things.

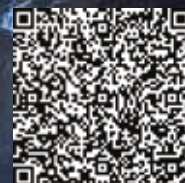
Make my ending greater than my beginning.

I want to finish the race triumphantly.

**SO HELP ME GOD!**

Amen.





MANA POOLS NATIONAL PARK

VICTORIA FALLS NATIONAL PARK

**YOUR NEXT ADVENTURE HOLIDAY IS IN ZIMBABWE**

**ZIMPARKS TOURIST DIRECTORY**

<p><b>HWANGE NATIONAL PARK</b></p>  <p><b>Tourist Attractions</b> Game Viewing Fishing Wilderness Trails Moonlight Viewing Viewing Platforms <b>Big 5!</b></p> <p><b>Tourist Facilities</b> Lodges, (56 Beds) Chalets, (38 Beds) Cottages (26 Beds) Campsites, Restaurant, Fuel Station <b>Nearest Town</b> Hwange 80km</p>	<p><b>LAKE CHIVERO RECREATIONAL PARK</b></p>  <p><b>Tourist Attractions</b> Game Viewing Rock Paintings Fishing Boating Walking Trails Rhino Trails Canoeing</p> <p><b>Tourist Facilities</b> Lodges, (34 Beds) Chalets, (50 Beds) Campsites, Function Catering Picnic Sites Festivals Venue <b>Nearest Town</b> Harare 37km</p>	<p><b>MUSHANDIKE SANCTUARY</b></p>  <p><b>Tourist Attractions</b> Game Viewing Fishing Guided Walks Picnic Sites Great Zimbabwe (60kms)</p> <p><b>Facilities</b> Lodges, (10 Beds) Wildlife Education Conferencing Sports Function Catering Swimming Pool <b>Nearest Town</b> Masvingo 29km</p>
<p><b>GONAREZHOU NATIONAL PARK</b></p>  <p><b>Tourist Attractions</b> Game Viewing Chilojo Cliffs Bush Camps Walking Safaris Chipinda Pools</p> <p><b>Tourist Facilities</b> Tent Lodges, 16bed Lodges, (28 Beds) Campsites, (14 Sites)</p> <p><b>Nearest Town</b> Chiredzi 55km Harare 473km</p>	<p><b>EWANRIGG BOTANICAL GARDENS</b></p>  <p><b>Tourist Attractions</b> Aloe Garden Walking Trails Birdwatching Bicycle Riding Exotic &amp; Indigenous Plants Nursery</p> <p><b>Tourist Facilities</b> Picnic Sites Restaurant Campsites, Wedding Venue Function Catering Wedding Venue <b>Nearest Town</b> Harare 38km</p>	<p><b>KYLE RECREATIONAL PARK</b></p>  <p><b>Tourist Attractions</b> Game Drives Lake Mutirikwi Fishing Boating Great Zimbabwe Rhino Trails Picnics Sikato Bay</p> <p><b>Tourist Facilities</b> Lodges, (31 Beds) Campsites, Conferences School Trips Function Catering <b>Nearest Town</b> Masvingo 33km Harare 325km</p>
<p><b>VICTORIA FALLS &amp; ZAMBEZI NATIONAL PARK</b></p>  <p><b>Tourist Attractions</b> Game Viewing Boat Cruises White Water Rafting Skydiving Bungee Jumping Ab Seiling</p> <p><b>Tourist Facilities</b> Lodges, (80 Beds) Campsites, (4 Sites)</p> <p><b>Nearest Town</b> Victoria Falls 5km Bulawayo 444km</p>	<p><b>DARWENDALE DAM RECREATIONAL PARK</b></p>  <p><b>Tourist Attractions</b> Boating Fishing Birdwatching Braai Picnics</p> <p><b>Tourist Facilities</b> Lodges, (8 Beds) Campsites, Picnic Sites</p> <p><b>Nearest Town</b> Harare 76km Norton 36km</p>	<p><b>VUMBA BOTANICAL GARDENS</b></p>  <p><b>Tourist Attractions</b> Exotic Garden Walking Trails Birdwatching Vumba Run Marathon Picnics</p> <p><b>Tourist Facilities</b> Lodges, (8 Beds) Garden Cafe Campsites, Wedding Venue Function Catering <b>Nearest Town</b> Mutare 21km Harare 284km</p>
<p><b>MANAPOOLS NATIONAL PARK</b></p>  <p><b>Tourist Attractions</b> Game Viewing Canoeing Fishing Guided Walks Lion Tracking</p> <p><b>Tourist Facilities</b> Lodges, (28 Beds) Tent Lodges (10 Beds) Campsites, (30 sites) Exclusive Camps <b>Nearest Town</b> Chirundu 139km Harare 391km</p>	<p><b>CHINHOYI CAVES RECREATIONAL PARK</b></p>  <p><b>Tourist Attractions</b> Cave Exploration School Trips Scuba Diving Wedding Venue</p> <p><b>Tourist Facilities</b> Motel (48 Beds) Conferences Campsites, Swimming Pool Function Catering Picnic Sites <b>Nearest Town</b> Chinhoyi 8km</p>	
<p><b>MATOPOS NATIONAL PARK</b></p>  <p><b>Tourist Attractions</b> Balancing Rocks Game Viewing Rhodes Grave Fishing Boating Walking Trails Rhino Trails Bicycle Safaris</p> <p><b>Tourist Facilities</b> Lodges, (62 Beds) Chalets, (8 Beds) Campsites, Tennis Court Function Catering Picnic Sites <b>Nearest Town</b> Bulawayo 34km</p>	<p><b>NGEZI RECREATIONAL PARK</b></p>  <p><b>Tourist Attractions</b> Family Fun Center Braai Party Venue Boating Fishing Birdwatching Group Tours Catering</p> <p><b>Tourist Facilities</b> Lodges, (36 Beds) Chalets, Campsites, <b>Nearest Town</b> Turf (Zimplats) 13km Harare 192km</p>	
<p><b>CHIMANIMANI NATIONAL PARK</b></p>  <p><b>Tourist Attractions</b> Bridal Veil Falls Mountain Hut Cave Exploration Mountain Hiking Walking Trails Scenic Viewing Birdwatching</p> <p><b>Tourist Facilities</b> Campsites, Picnic Sites</p> <p><b>Nearest Town</b> Mutare 151km Harare 414km</p>	<p><b>NYANYANA - LAKE KARIBA</b></p>  <p><b>Tourist Attractions</b> Game Viewing Tiger Fishing Kariba Dam Wall Boating Boat Cruises Houseboats Crocodile Farm</p> <p><b>Tourist Facilities</b> Lodges, (12 Beds) Campsites, <b>Nearest Town</b> Kariba 20km Harare 360km</p>	
<p><b>BOULTON ATLANTICA CENTRE</b></p>  <p><b>Tourist Attractions</b> Game Viewing Walking Trails Educational Trips</p> <p><b>Tourist Facilities</b> Lodge, (10 beds) Guesthouse, (4beds) Campsites, Wedding Venue Function Catering Conferences <b>Nearest Town</b> Harare 25km</p>	<p><b>NYANGA NATIONAL PARK</b></p>  <p><b>Tourist Attractions</b> Mount Nyangani Mtarazi Falls Zipline &amp; Skybridge Fly Fishing (Trout) Hiking Trails Canoeing Worlds View</p> <p><b>Tourist Facilities</b> Lodges, (154 Beds) Chalets, Campsites, Picnic Conferences Function Catering <b>Nearest Town</b> Harare 264km Mutare 108km</p>	
<p><b>MATUSADONA NATIONAL PARK</b></p>  <p><b>Tourist Attractions</b> Game Viewing Fishing <b>Big 5!</b></p> <p><b>Tourist Facilities</b> Lodges, (16 beds) Chalets, <b>Nearest Town</b> Gokwe 203km</p>	<p><b>OSBORNE DAM RECREATIONAL PARK</b></p>  <p><b>Tourist Attractions</b> Game Viewing Canoeing Fishing Boating</p> <p><b>Tourist Facilities</b> Lodges, (10 Beds) Campsites, Picnic Sites <b>Nearest Town</b> Mutare 34km</p>	

**ACTIVITIES OFFERED**



**VISIT ZIMBABWE FOR AN EXCITING ADVENTURE HOLIDAY AND EXPERIENCE UNTAMED WILDLIFE ENERGY.**

**NEW ATTRACTIONS**  
 SKYWALK - MUTARAZI FALLS NYANGA  
 SKY DIVING - VICTORIA FALLS

- ★ LODGES
- 🏠 CAMPING
- 🚐 CARAVAN
- 🍴 RESTAURANT
- 🚙 GAME DRIVE
- 🔍 BIRD WATCHING
- 🛢️ FUEL STATION
- 🏥 CLINIC